

Access: Switch Function

In Access, the **Switch** function evaluates a list of expressions and returns the corresponding value for the first expression in the list that is TRUE.

The syntax for the **Switch** function is:

Switch (expression1, value1, expression2, value2, ... expression_n, value_n)

expression1, expression2, expression_n is a list of expressions that are evaluated. The **Switch** function is looking for the first expression that evaluates to TRUE.

value1, value2, ... value_n is a list of values. The **Switch** function will return the value associated with the first expression that evaluates to TRUE.

For example:

Switch (SupplierID=1, "IBM", SupplierID=2, "HP", SupplierID=3, "Nvidia")

In this example, if the SupplierID field is 1, then the Switch function will return "IBM".

If the SupplierID field is 2, then the Switch function will return "HP".

If the SupplierID field is 3, then the Switch function will return "Nvidia".

VBA Code

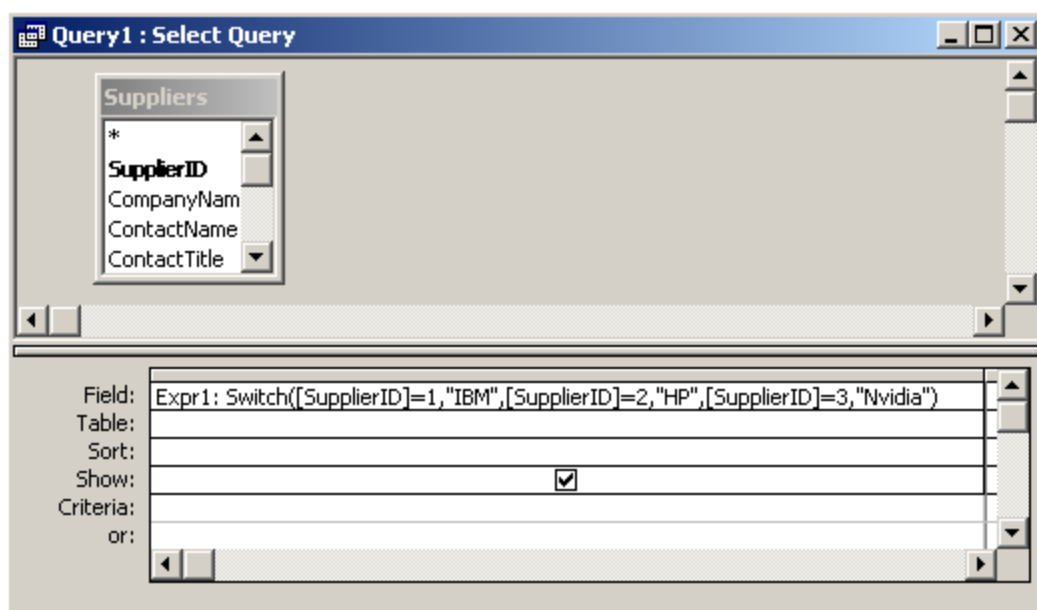
The **Switch** function can be used in VBA code. For example:

```
Dim LValue As String
```

```
LValue = Switch (SupplierID=1, "IBM", SupplierID=2, "HP", SupplierID=3, "Nvidia")
```

SQL/Queries

You can also use the **Switch** function in a query.



In this example, if the SupplierID field is 1, then the Switch function will return "IBM".

If the SupplierID field is 2, then the Switch function will return "HP".

If the SupplierID field is 3, then the Switch function will return "Nvidia".